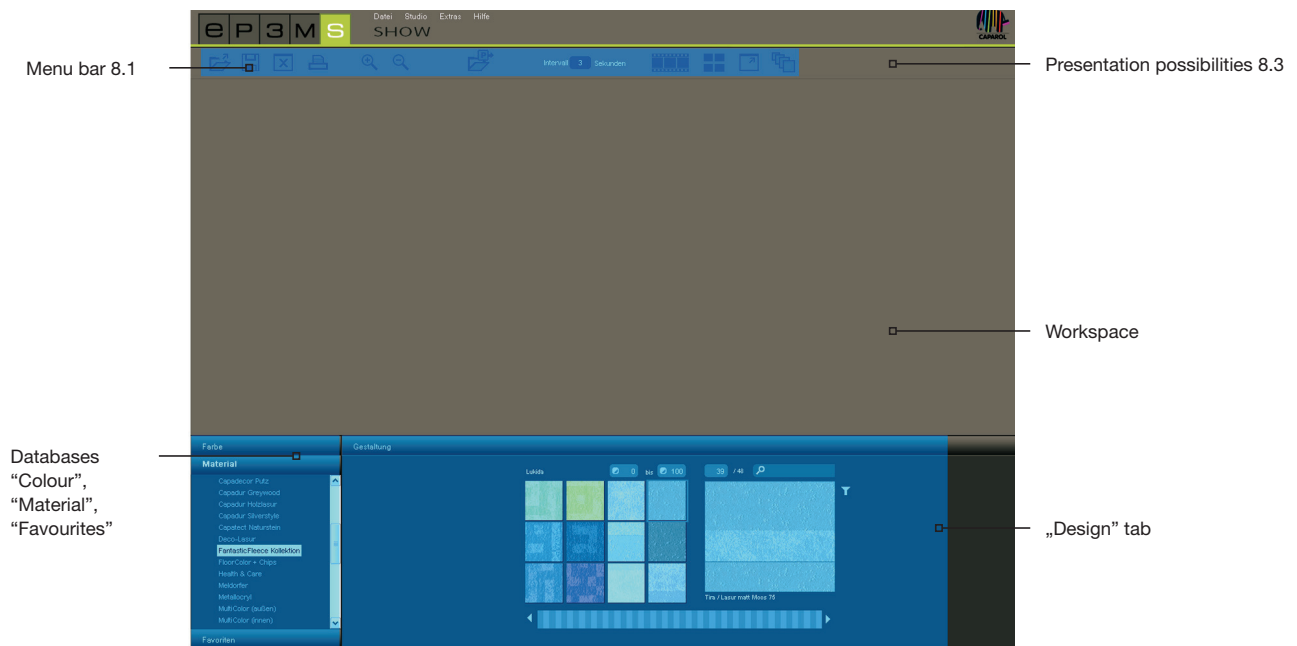




8. SHOW

You can use the “SHOW” module to put your variants, materials and colours together in a collage, compare them and present them in a slideshow. The SHOW is ideal for presenting your own range of products at the POS or to present an overview of variant contents and advise customers accordingly.



8.1 Menu bar

The special thing about the SHOW workspace is that you can move image data around freely in it like on a desktop (or touchscreen). Pictures, samples or 3D views can be arranged next to one another, superimposed or in a collage, all at the same time.



Open SHOW

Click “Open” to load an existing SHOW project from your own projects to the workspace (alternatively use “File”>“Open” in the main navigation). Choose the desired SHOW project in the dialogue window and confirm your choice by clicking “OK”. In addition, SHOW can be opened by double-clicking through the EXPLORER.

Note: Image data that are greyed out cannot be loaded in SHOW.



Save SHOW

Click the “Save” button to save your current workspace composition. In the dialogue window that opens you can give your SHOW project a name and save it in the desired project folder or create a new project folder for it.



Clear

If you would like to clear the SHOW workspace completely of all materials, colours and image data, click the “Clear” tool.



Print

Choose the “Print” button to print the current arrangement of your SHOW workspace as a PDF.



Zoom in/zoom out

To zoom individual image, colour or material data in or out, first click the required object (the active object is marked by an “X” at the top right-hand corner) and then move the mouse wheel over the object to zoom in/out, or click the respective “Magnifying glass” symbol.



Open



Click “Open” to load image data, colour and material samples from your own projects or the EXPLORER database to the SHOW workspace (alternatively use “File”>“Open” in the main navigation). Choose the image you require in the dialogue window and confirm by clicking “OK”.

Optionally, the colour and material data used for an image can be imported as well.

Note: Image data that are greyed out cannot be loaded in SHOW.

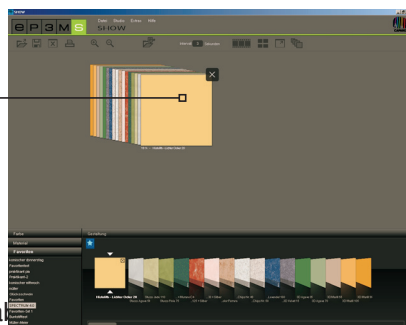
8.2 Add colour and material data

To create a SHOW, choose colours and materials from the “Colour”, “Material” and “Favourites” tabs in the lower area of the software. Choose the collection you require and load a sample by clicking the respective thumbnail picture in the “Design” tab.

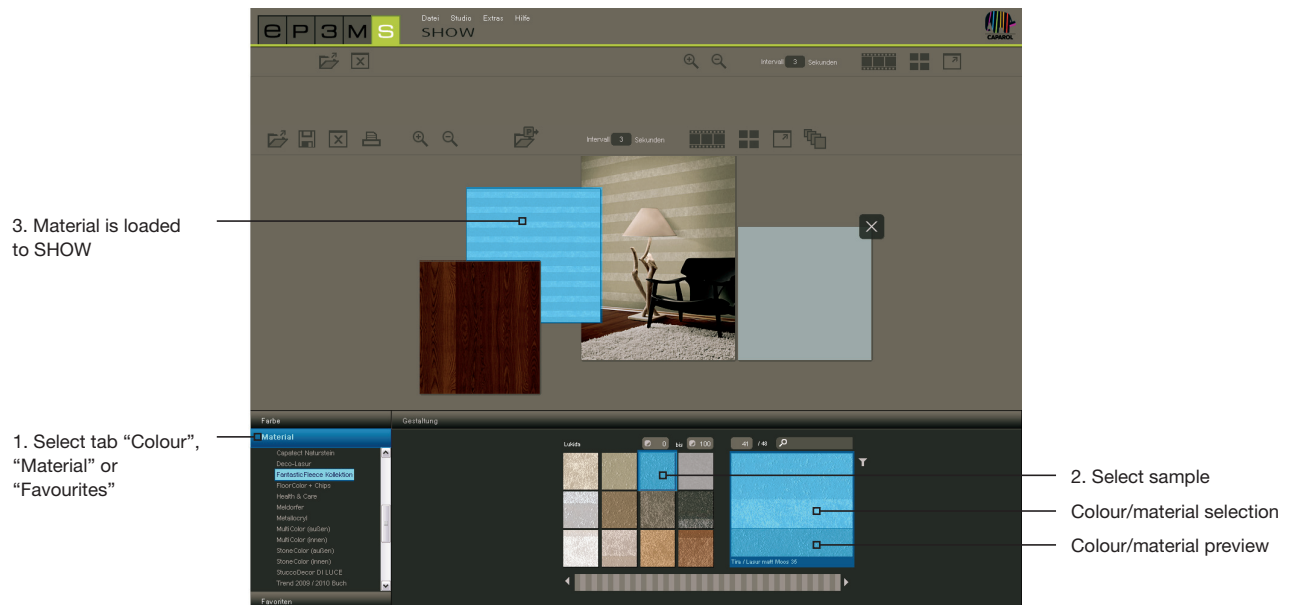


To import the entire contents of a set of favourites, click the white “star” button “Add all favourites”. All the favourite cards it contains are loaded in an organised form to the workspace.

List of favourites in order



Note: Further information about the workspace and favourites can be found in chapter 5.3.1 “Select colour, material and favourites”, information about the “Design” tab and search possibilities is included in chapter 5.3.2 “Design” tab.



8.3 Presentation possibilities

There are three different presentation possibilities available in the SHOW module: Slideshow, comparison and full screen mode.



Start slideshow

When you click this symbol, a slideshow of all the objects currently in the SHOW workspace will begin. For this, the images and surfaces are shown in sequence in full screen mode on the screen.

To close the slideshow and return to the SHOW workspace, simply left-click into the slideshow.

Note: You can determine the time in between images yourself. To do this, enter a figure for number of seconds in the "Interval" field. 3 seconds is the default setting here.

The slideshow is ideal for presenting your own variants, colours and surfaces during a meeting with a customer or for advertising purposes on a large screen in the POS. It is particularly impressive when the same image is shown several times in succession in different variants.



Compare

A fast and clear comparison of selected images/variants can be obtained by clicking the "Compare" button. All the image data currently on the workspace are arranged in such a way that you can compare them with one another. Objects that are behind one another are placed next to one another for this purpose. The more image data are compared at the same time, the smaller the image size of each shown. If the number of images is reduced by deleting individual images, click the "Compare" button again to adapt the remaining images to their maximum display size.



Full screen

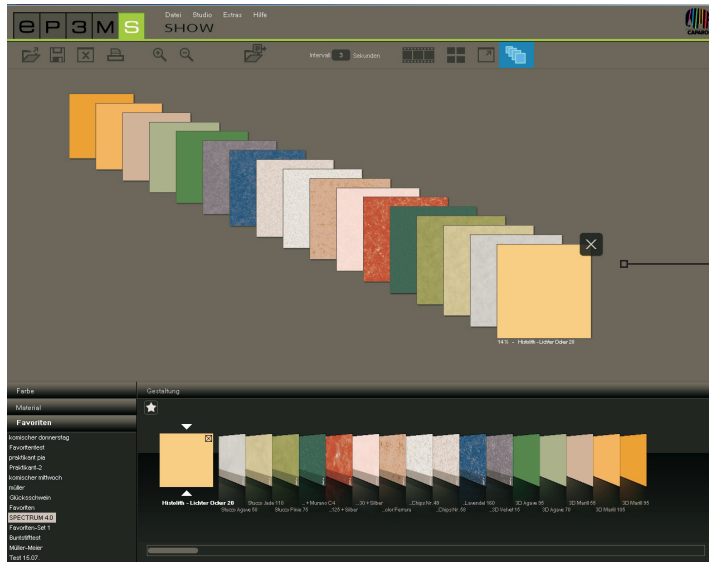
Full screen mode allows you to show the current arrangement of your composition as a full screen. Menu bar, tab etc. are hidden for this purpose. Click the "Full screen" button again to return to the workspace.

8. SHOW



Sort mode on/off

When you click these buttons all the image data on the SHOW workspace are sorted and arranged in an overlapping row. Keeping the left-hand mouse button pressed, you can drag individual samples out of the row and add them again in a different place (release mouse button). The sequence chosen here determines the sequence of the image data during the slideshow (display runs from back to front or left to right).



Sorted image data = slideshow sequence

Note: When the “Sort mode on/off” is activated, the image data cannot be arranged outside this row on the workspace. Objects can only be moved at will once the button has been clicked again.